



SPECS & OVERVIEW

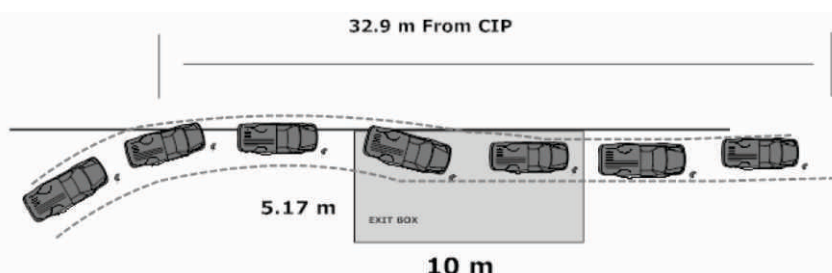
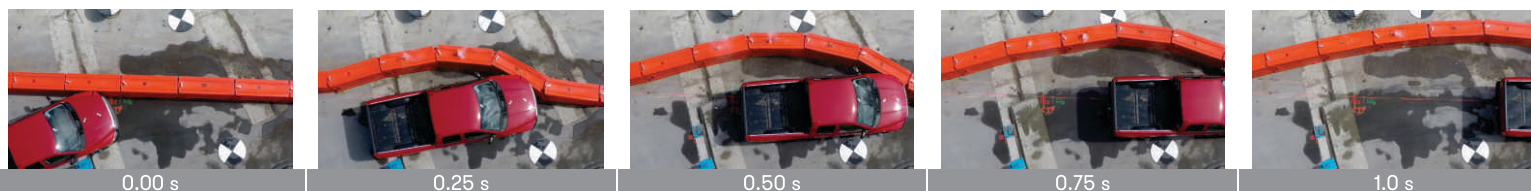
The Shield I safety crash barrier is a unique barrier utilizing a high strength modified UV stabilised polyethylene and patented composite design. Made in Australia and approved by road authorities Australia wide.

It is a redirective barrier, easy to install with steel connecting pins. Tested containment MASH test level 1 (2,270kg) at 50km/h and 25 degrees Accepted dynamic deflection 2.2 metres. Status-Accepted and may be used on the classified road network.

Applications

- Safety barrier
- Road works
- Road closures
- Events
- Certified for use on Road Networks up to 50Kph

HEIGHT	920mm
WIDTH	600mm
EFFECTIVE LENGTH	2,000mm
OVERALL LENGTH	2,200mm
WEIGHT EMPTY	81kg
WEIGHT FULL	611kg
WATER FILL TO TOP	530Lt
IMPACT SPEED RATING TL-1	50kph
JOINING SYSTEM	Steel Pin
MINIMUM LENGTH OF NEED	44m
MASH TEST LEVEL 1 <small>(2,270kg at 50km/h and 25 degrees. Accepted dynamic deflection 2.2 metres)</small>	YES
ROAD AUTHORITY APPROVED	YES



Test Article:	National Plastics WFTB
Total Length	52.0m
Key Elements - Barrier	Test 1-11
Description	Water filled temporary barrier
Length of Barrier Installation	44.0m length of need
Height	0.92m
Length of Barrier Segments	2.3m (2.0m between pins)
Test Vehicle	
Designation	2270P
Make/Model	Dodge Ram 1500
Dimensions (LxWxH)	5820mm x 2040mm x 1930mm
Curb Wt	2287kg
Test Inertial Wt	2287kg
Gross Static	2287kg
Impact Conditions	
Speed	49.6km/h
Angle	25.5 degrees
Impact Point	900mm upstream of barrier joint 11B and 12A
Exit Conditions	
Exit Speed	27.7km/h
Exit Angle	0°

Post Impact Vehicle Behaviour	
Vehicle Stability	Good
Stopping Distance	32.9m
Vehicle Snagging	None
Vehicle Pocketing	None
Occupant Impact Velocity	0.2171 seconds right side of interior
Longitudinal	-2.7
Lateral (optional)	2.7
Occupant Ride-down Deceleration	
X-direction (g)	1.5 (0.3063 - 0.3163 seconds)
Y-direction (g)	-1.6 (0.3125 - 0.3225 seconds)
THIV (optional) (m/s)	4.0
PHD (optional) (g)	2.2 (0.3083 - 0.3183 seconds)
ASI (optional)	0.33 (0.0337 - 0.0837 seconds)
Test Article Damage	Minor
Test Article Deflections	
Dynamic	2.19m
Permanent	2.19m
Working Width	2.19m
Vehicle Damage Exterior	
VDS	11FL-1
CDC	11LFEE1
Maximum Deformation	80mm